

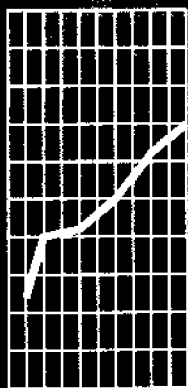


December 1997

EMBARGO: 11:30 AM (CANBERRA TIME) MON 22 DEC 1997

# **Business Indicators**

## **Australian Capital Territory**



## NOTES

### FORTHCOMING ISSUES

<i>ISSUE</i>	<i>RELEASE DATE</i>
January 1998	27 January 1998
February 1998	23 February 1998

### SYMBOLS AND OTHER USAGES

ACT	Australian Capital Territory
n.a.	not available
n.p.	not available for publication
p	preliminary
*	Represents data with a standard error of greater than 25%. Caution should be exercised when using this data.
—	nil or rounded to zero

### INQUIRIES

For further information about statistics in this publication and the availability of related unpublished statistics, contact Conrad Bulenda on Canberra (06) 207 0286 or any ABS State office.

For information about other ABS statistics and services, please refer to the back of this publication.

Dalma Jacobs  
Regional Director

## SUMMARY OF FINDINGS

### UPDATED SERIES

Series updated since the November 1997 issue are: state final demand; labour force; industrial disputes; housing finance; housing and construction; retail turnover; new motor vehicle registrations; average weekly earnings; house prices and tourist accommodation. There is a feature article on Employed Persons by Industry and Occupation and one on Field of study of the Unemployed in the ACT on pages 7-9.

### NOTABLE MOVEMENTS

#### State final demand

Trend final demand at average 1989-90 prices for the ACT decreased 1.0%, from \$2,809 million in the June quarter 1997 to \$2,781 million in the September quarter 1997. Final Consumption Expenditure in the ACT recorded a 1.4% increase while Gross Fixed Capital Expenditure recorded a 25.8% decrease during the quarter. Nationally, Trend Final Demand at 1989-90 prices increased by 1.3% from the corresponding quarter, with Final Consumption Expenditure and Gross Fixed Capital Expenditure increasing by 0.9% and 2.7% respectively.

#### Labour force

Trend employment decreased marginally (down 0.3% to 155,600 persons) in November 1997 with the ACT recording its sixth consecutive month of decline. The continued increase in the trend unemployment rate (up by 0.1 percentage point) is completely due to falling numbers of people in part-time employment. The number of full time employed increased slightly during November (up by 200) while the participation rate fell from 72.5% to 72.3%. Notwithstanding the decline in the participation rate the unemployment rate increased from 8.4% to 8.5%. Nationally, trend employment increased marginally (up 0.3% in November), while the unemployment rate fell 0.1 percentage points to 8.4%.

#### Industrial disputes

For the 12 months ended August 1997, there were 22 working days lost per 1,000 employees in the ACT compared to 62 days lost per thousand in Australia. This represented a 45% decrease for the ACT and a 17.3% decrease for Australia from the previous month's figure.

#### Housing finance

The trend number of dwelling units financed (including refinancing) in the ACT during October 1997 increased to 750 dwellings, a rise of 2.8%. The trend estimate for the value of commitments in the ACT was \$79.7 million, an increase of 2.4% on the previous month. This is the fourth consecutive monthly increase. Refinancing of existing dwellings comprised 18.4% of the total number of dwelling units financed in October 1997, which was down 2.0 percentage points on the previous month. Nationally, the trend number of dwelling units financed (including refinancing) during October 1997 remained steady and the trend estimate for the value of commitments increased by 0.8%.

## Housing and construction

The trend number of dwelling units approved in the ACT increased by 7.9% to 123 dwelling units in October 1997, the third consecutive monthly increase. Nationally the total number of dwelling units approved increased by 0.6% in October 1997. The trend number of dwelling units approved in Australia has increased for each of the last four months.

The value of non-residential building approvals in the ACT was \$21.1 million in October 1997, an increase of \$12.1 million (or 134.4%) from the previous month and an increase of \$6.5 million (44.5%) on October 1996. Nationally, the value of non-residential building approvals increased by 13.6% from the previous month and decreased by 15.1% since October 1996.

## Retail turnover

The trend estimate for retail turnover in the ACT for October 1997 was \$213.6 million, up 0.1% on the previous month's figure of \$213.3 million. The national trend retail turnover recorded an increase of 0.5% on the previous month.

## Motor vehicle registrations

The trend estimate for ACT new motor vehicle registrations in October 1997 was 1,333, up 3.2% on the previous month, and up 54.3% on October 1996. The series has now recorded twelve consecutive months of increase. Nationally, the trend for total new registrations in October 1997 recorded a 1.6% increase, the thirteenth consecutive monthly increase.

## Average weekly earnings

The trend average weekly earnings for the August quarter 1997 in the ACT was \$676.40, an increase of 0.6% from May quarter 1997 and 3.6% from August quarter 1996. Nationally, the trend average weekly earnings increased by 0.7% from May quarter 1997 and 2.7% from August quarter 1996.

## House prices

The quarterly established house price index for Canberra decreased by 1.7% in the September quarter 1997 and the index also recorded a decline of 1.7% over the year. The weighted average of eight capital cities increased 1.8% in the September quarter 1997, and increased 4.3% over the year.

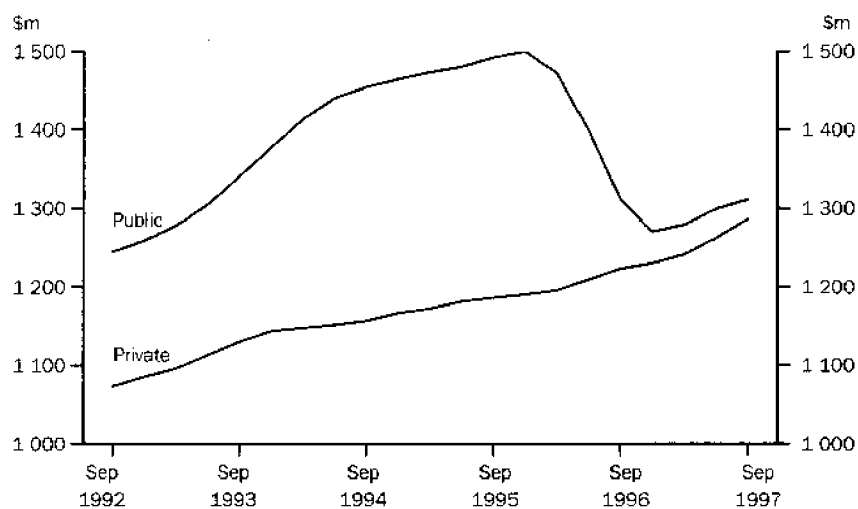
## Tourist accommodation

Room occupancy rates for ACT hotels, motels and guest houses in the September quarter 1997 was 56.3%, up 1.8 percentage points on the previous quarter but down 1.2 percentage points on twelve months ago.

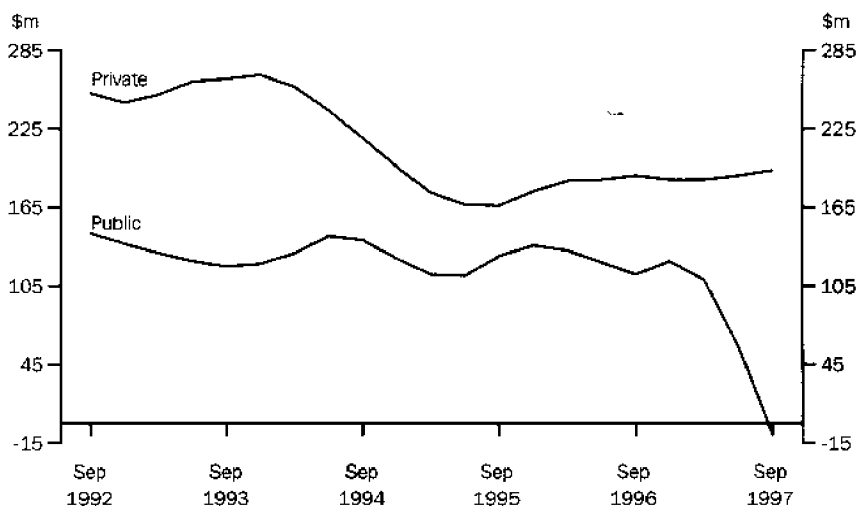
Trend takings from accommodation at average 1989-90 prices was \$15.9 million for the June quarter 1997 in the ACT, down 0.6% from the previous quarter but up 0.6% from the corresponding quarter of the previous year.

## SELECTED BUSINESS INDICATORS

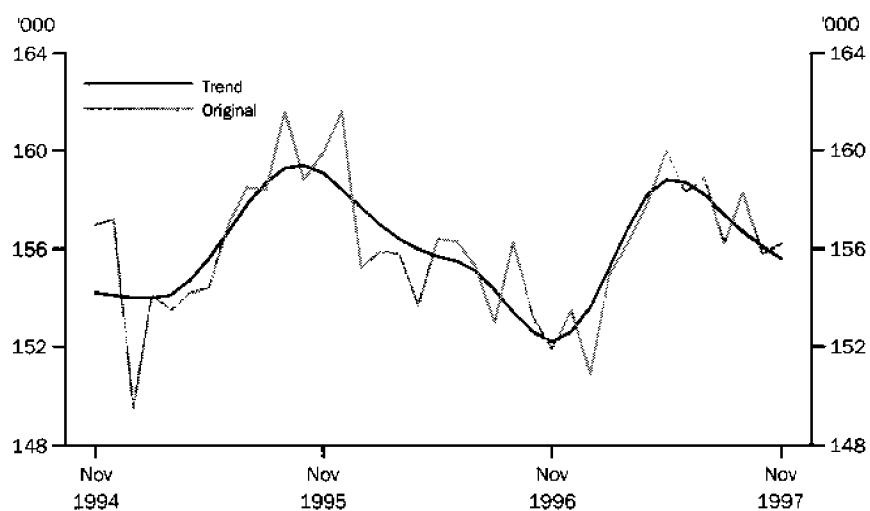
ACT PUBLIC AND PRIVATE  
FINAL CONSUMPTION  
EXPENDITURE (TREND)



ACT PUBLIC AND PRIVATE  
GROSS FIXED CAPITAL  
EXPENDITURE (TREND)

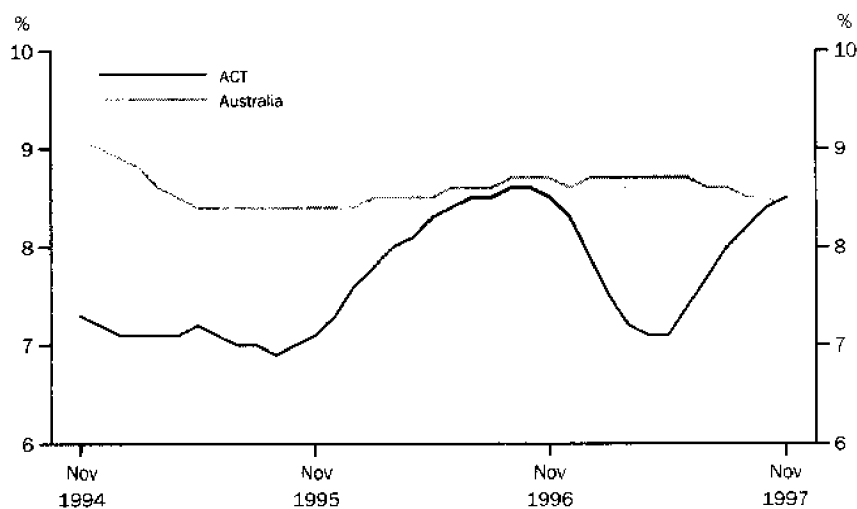


LABOUR FORCE —  
EMPLOYMENT

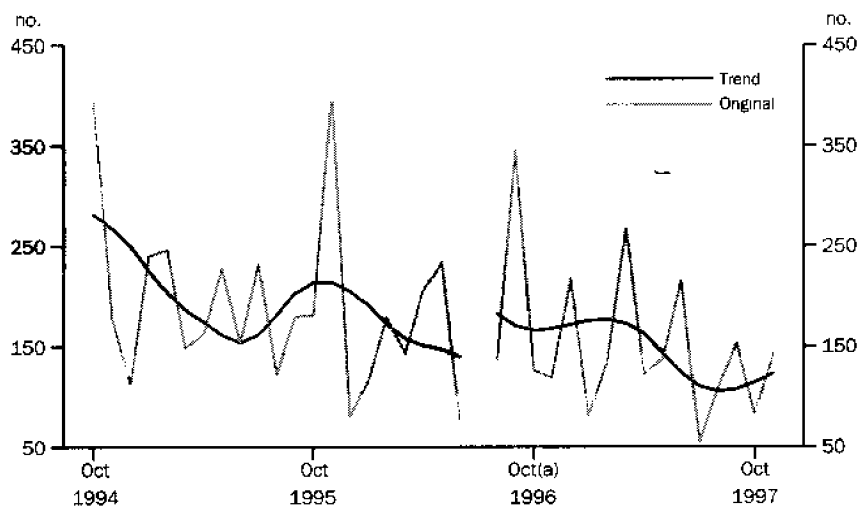


## SELECTED BUSINESS INDICATORS *continued*

### LABOUR FORCE — TREND UNEMPLOYMENT RATE

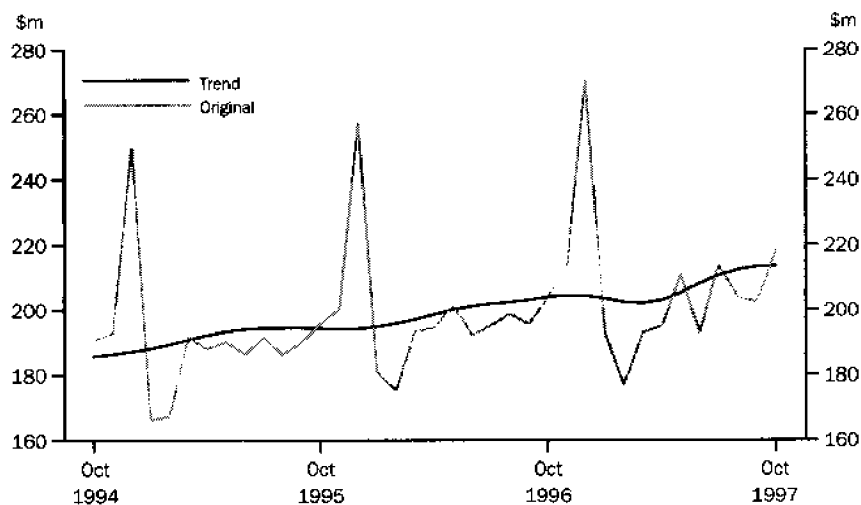


### BUILDING APPROVAL — DWELLING UNITS APPROVED



(a) For the period July to December 1996, 165 dwelling units and total building work of \$40.5 million (16%) had been incorrectly omitted from data reported to ABS. All series for the ACT have been revised from July 1996. As further information is received and analysed, the series prior to that are likely to be revised. A trend break has been included in the graph.

### RETAIL TURNOVER



**EMPLOYED PERSONS BY INDUSTRY IN THE ACT —  
CENSUS DATA**

In August 1996 the Census of Population and Housing revealed that there were 149,420 employed persons in the ACT (based on place of enumeration for persons aged 15 years and over). Of these, 25.5% or 38,156 were employed in the Government administration and defence industry. This was followed by Retail trade (11.4% or 17,051), Property and Business Services (10.7% or 16,028), Education (8.9% or 13,321), Health and community services (8.0% or 11,884) and Accommodation, cafes and restaurants (4.9% or 7,264).

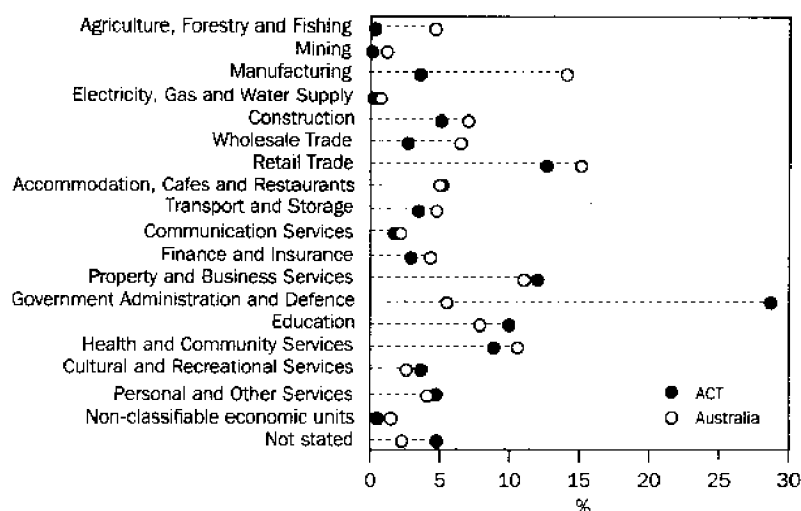
Since the 1986 Census, the Construction industry (down 23.1% or 2,082) and Finance and insurance industry (down 11.7% or 507) have experienced the largest declines in the total number of persons employed in the ACT, while Property and business services (up 71.4% or 6,676), Retail trade (up 33.3% or 4,257), Health and community services (up 49.1% or 3,912), Accommodation, cafes and restaurants (up 87.4% or 3,388) and Personal and other services (up 45.1% or 1,960) experienced the largest increases.

Government administration and defence, the largest employer of persons by industry type in the ACT, experienced a small increase of 3.2% in the total number of persons employed over the ten year period to August 1996, rising from 36,960 persons in 1986 to 38,156 persons in 1996. In contrast, the proportion of persons employed in that industry fell 4.3 percentage points, from 29.8% in 1986 to 25.5% in 1996.

Nationally, Retail trade (13.6%) accounted for the largest proportion of employed persons by industry type, followed by Manufacturing (12.6%), Property and business services (9.8%), Health and community services (9.5%) and Education (7.1%). Since the 1986 Census, the Electricity, gas and water supply industry (down 53.4%) and the Agriculture, forestry and fishing industry (down 11%) have experienced the largest declines in the total number of persons employed in Australia, while Property and business services (up 82.2%), Accommodation, cafes and restaurants (up 67.5%), Health and community services (up 37.1%) and Education (up 24.4%) experienced the largest increases.

Of the employed persons in the ACT in August 1996, 78,817 (52.7%) were male and 70,603 (47.3%) were female. There were more males employed in Construction (87% of all workers), Manufacturing (67.7%), Government administration and defence (57.2%) and Property and business services (56.8%). Conversely, there were more females employed in Health and community services (78.9%), Education (62.8%) and Finance and insurance (60%). Nationally, there were more males employed in Mining (87.5%), Construction (86.6%), Transport and storage (75.4%) and Manufacturing (72.0%), with more females employed in Health and community services (77.7%) and Education (65.9%).

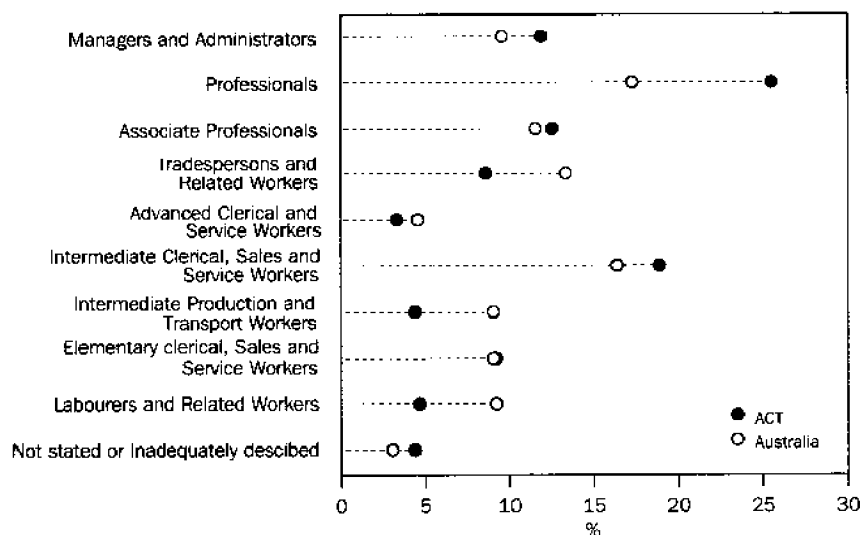
# PROPORTION EMPLOYED BY INDUSTRY, AUGUST 1996



## EMPLOYED PERSONS BY OCCUPATION IN THE ACT — CENSUS DATA

In August 1996, the occupation group with the greatest number of employed persons in the ACT was Professionals (25.3% or 37,863). This was followed by Immediate clerical, sales and service workers (18.5% or 27,650), Associate professionals (12.2% or 18,267) and Managers and administrators (11.7% or 17,547). Nationally, 17.1% of people employed were Professionals, 16% were Intermediate clerical, sales and service workers and 13% were Tradespersons and related workers.

### PROPORTION EMPLOYED BY OCCUPATION, AUGUST 1996





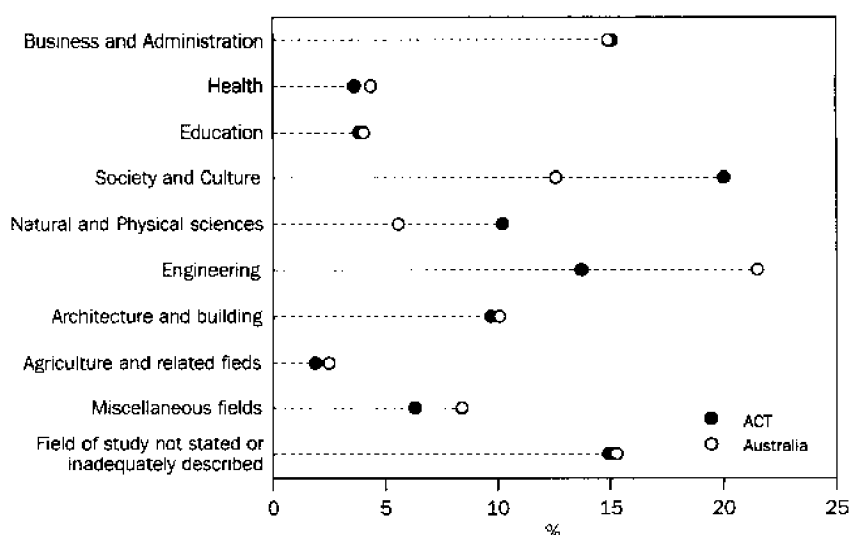
## FIELD OF STUDY OF THE UNEMPLOYED IN THE ACT — CENSUS DATA

According to the Census of Population and Housing there were 11,813 persons unemployed in the ACT on the 6 August 1996. Of these, 4,264 (36.1%) had a post-school educational qualification and 7,549 (63.9%) did not have a qualification. Of the 4,264 persons with a qualification, 33.1% or 1,411 people had a bachelor degree or higher qualification, 13.3% or 567 people had attained a diploma and 53.6% or 2,286 people had a vocational or other qualification. Nationally, 32% of unemployed persons had a post-school educational qualification while the remaining 68% were without a qualification. Of those persons with a qualification, 19.8% had a bachelor degree or higher qualification, 13.4% had attained a diploma and 66.8% had a vocational or other qualification.

The main fields of study of unemployed persons with a post-school educational qualification in the ACT were Society and culture (857 or 20.1%), Business and administration (646 or 15.1%), Engineering (587 or 13.8%) and Natural and physical sciences (440 or 10.3%). Nationally, the details were Engineering (21.6%), Business and administration (15.1%) and Society and culture (12.6%).

In the ACT, 1,366 or 32% of all unemployed persons with post-school educational qualifications were aged 20–29 years. Of these, 459 (33.6%) had a bachelor degree or higher qualification, 198 (14.5%) had attained a diploma and 709 (51.9%) had a vocational or other qualification. Nationally, 30.8% of unemployed persons with a post-school educational qualifications were aged 20–29 years. Of these, 22.1% had a bachelor degree or higher qualification, 14.8% had attained a diploma and 63.1% had a vocational or other qualification.

PROPORTION UNEMPLOYED BY FIELD OF STUDY, Post-school educational qualifications



# 1

## BUSINESS EXPECTATIONS: SALES, DECEMBER QUARTER 1997/DECEMBER QUARTER 1998, EXPECTED AGGREGATE CHANGE

	ACT	Aust.
<i>Period</i>	%	%
<b>Short-term</b>		
Mar qtr 1996–Jun qtr 1996	1.8	2.3
Jun qtr 1996–Sep qtr 1996	0.4	1.6
Sep qtr 1996–Dec qtr 1996	-0.3	1.6
Dec qtr 1996–Mar qtr 1997	-1.1	0.4
Mar qtr 1997–Jun qtr 1997	1.3	1.6
Jun qtr 1997–Sep qtr 1997	-1.7	0.7
Sep qtr 1997–Dec qtr 1997	0.5	3.0
<b>Medium-term</b>		
Mar qtr 1996–Mar qtr 1997	2.3	4.1
Jun qtr 1996–Jun qtr 1997	1.4	3.6
Sep qtr 1996–Sep qtr 1997	1.5	3.1
Dec qtr 1996–Dec qtr 1997	2.2	3.1
Mar qtr 1997–Mar qtr 1998	1.7	2.9
Jun qtr 1997–Jun qtr 1998	2.0	2.4
Dec qtr 1997–Dec qtr 1998	1.2	3.9

Indicator	Unit	ACT			Aust.		
		% change from			% change from		
		Latest figure	Previous period	Same period previous year	Latest figure	Previous period	Same period previous year
<b>POPULATION, VITAL AND LABOUR</b>							
POPULATION Mar qtr 97	'000	310.1	0.5	1.0	18 492.0	0.4	1.3
Natural increase	no.	728	-6.8	-1.6	33 855	8.9	-2.5
Net migration	no.	866	—	—	31 243	—	—
Total increase	no.	1 594	—	—	65 098	—	—
<b>LABOUR FORCE Nov 97</b>							
Original series Nov 97							
Employed	'000	156.2	0.3	2.8	8 521.5	0.7	1.5
Unemployed	'000	12.5	-4.6	-1.6	736.8	0.1	-0.1
Unemployment rate(a)	%	7.4	-0.3	-0.3	8.0	—	-0.1
Participation rate(a)	%	71.7	-0.1	1.3	63.2	0.3	—
Long-term unemployed (Oct 97)	no.	2 525	-22.8	-20.1	246 675	-7.9	8.5
Long-term unemployed as percentage total unemployed (Oct 97)(a)	—	19.3	-4.8	-5.2	33.5	-0.3	3.8
Trend series Nov 97							
Employed	'000	155.6	-0.3	2.2	8 480.7	0.3	1.0
Unemployed	'000	14.5	1.4	2.1	779.7	-0.5	-2.0
Unemployment rate(a)	%	8.5	0.1	—	8.4	-0.1	-0.3
Participation rate(a)	%	72.3	-0.2	1.2	63.2	—	-0.4
<b>WAGE AND SALARY EARNERS, May 97</b>							
Trend Series							
Public Sector	'000	66.7	-2.1	-9.5	1 469.6	-0.6	-5.9
Private Sector	'000	75.5	5.0	11.7	5 358.9	0.9	1.8
Total Public and Private	'000	142.2	1.6	0.6	6 828.5	0.6	—
JOB VACANCIES, Aug 97	'000	1.0	—	11.1	69.3	19.3	9.1
<b>INDUSTRIAL DISPUTES IN PROGRESS, Aug 97</b>							
Working days lost	'000	0.1	—	-96.3	31.8	-18.3	-74.1
Days lost per '000 employees (year ended Aug 97)	no.	22.0	-45.0	84.5	62.0	-17.3	-56.0
<b>BUILDING AND CONSTRUCTION</b>							
<b>HOUSING FINANCE, Oct 97</b>							
Secured commitments to individuals for							
Original series							
Construction of dwellings	\$m	9.2	46.0	39.4	714.2	-3.1	27.2
Purchase of new dwellings	\$m	5.1	-10.5	-27.1	255.9	-0.2	20.5
Purchase of established dwellings	\$m	56.9	16.8	26.7	2 947.3	4.9	18.3
Refinancing	\$m	11.7	-23.5	-36.4	808.5	-4.6	-2.9
Total housing commitments	\$m	81.7	-1.7	6.1	4 725.9	1.6	15.3
Seasonally adjusted series							
Total housing commitments	\$m	78.9	-3.4	7.5	4 613.4	0.9	15.2
Trend series							
Dwelling units financed	no.	750	2.9	-11.1	40 108	—	—
Total housing commitments	\$m	79.7	2.4	-6.5	4 543.2	0.8	11.7
<b>BUILDING APPROVALS, Oct 97</b>							
Original series							
Dwelling units	no.	142	71.1	19.3	12 626	-1.1	5.4
Value of new residential	\$m	18.3	63.4	33.6	1 334.7	-0.9	15.2
Value of residential alterations and additions	\$m	6.3	23.5	-1.6	256.0	3.3	12.6
Value of non-residential	\$m	21.1	134.4	44.5	1 176.7	13.6	-15.1
Value of total building	\$m	45.7	80.6	31.7	2 767.5	5.2	-0.2
Trend series							
Dwelling units	no.	123	7.9	-26.8	12 119	0.6	11.3

(a) State estimates are not comparable to national estimates from the June quarter 1995 due to revised methodology used in Australian National Accounts, State Accounts (Cat. no. 5242.0).

Indicator	Unit	ACT			Aust.		
		Latest figure	Previous period	% change from Same period previous year	Latest figure	Previous period	% change from Same period previous year
<b>BUILDING AND CONSTRUCTION continued</b>							
<b>BUILDING COMMENCEMENTS, Jun qtr 97</b>							
New houses	no.	294	3.9	-14.0	22 876	11.8	9.1
Value of houses commenced	\$m	33.1	6.8	-7.8	2 527.9	12.6	13.6
Value of non-residential building commenced	\$m	40.6	-64.1	72.5	2 840.8	-10.8	-3.0
Value of total commencements	\$m	121.6	-28.4	-43.0	7 015.2	0.1	4.5
<b>PRICE INDEXES</b>							
Established house price index, Sep qtr 97		125.1	1.7	-1.7	118.9	1.8	4.3
<b>ENGINEERING CONSTRUCTION (Jun qtr 97)</b>							
Private sector							
Value of work commenced	\$m	9.1	4.6	-69.8	2 905.1	36.5	56.6
Value of work done	\$m	14.1	4.4	-25.4	2 355.2	14.9	7.2
Value of work yet to be done	\$m	23.5	-16.1	-41.4	6 020.2	10.5	26.5
Value of work done by public sector	\$m	24.2	47.6	14.7	1 901.2	44.4	-0.9
<b>PRICES, WAGES AND CONSUMER SPENDING</b>							
<b>CONSUMER PRICE INDEX, Sep qtr 97</b>							
Food	(a)	122.9	0.3	2.2	120.8	—	2.1
Housing	(a)	97.0	-1.7	-13.4	95.9	-1.0	-9.6
Transportation	(a)	130.6	-0.1	1.3	124.4	0.4	0.8
All groups	(a)	119.8	-0.5	-1.3	119.7	0.4	-0.3
<b>AVERAGE WEEKLY EARNINGS, Aug 97</b>							
Original series							
Males	\$	779.6	2.1	2.3	693.8	1.0	3.0
Females	\$	576.9	2.3	5.7	460.2	0.6	3.4
Persons	\$	677.6	2.0	4.6	582.2	0.8	2.7
Trend series							
Males	\$	775.0	0.4	1.8	694.8	0.7	2.8
Females	\$	576.0	1.0	4.3	461.4	0.8	3.5
Persons	\$	676.4	0.6	3.6	583.6	0.7	2.7
<b>RETAIL TURNOVER, Oct 97</b>							
Original series							
Food retailing	\$m	83.6	9.0	1.7	4 643.9	7.4	5.8
Department stores	\$m	23.2	8.9	1.8	977.1	4.0	4.6
Hospitality and services	\$m	34.4	2.7	3.0	1 907.7	5.8	5.3
All other retailing	\$m	77.1	8.7	17.9	3 904.5	5.8	6.2
Total	\$m	218.3	7.9	7.1	11 433.2	6.3	5.7
Trend series							
Food retailing	'000	79.9	0.6	-2.1	4 498.8	0.5	5.1
Department stores	\$m	24.4	0.8	2.5	1 014.3	1.0	4.8
Hospitality and services	\$m	33.1	—	3.4	1 870.1	0.1	5.3
All other retailing	%	76.2	-0.5	14.4	3 827.3	0.5	6.1
Total	'000	213.6	0.1	4.7	11 210.5	0.5	5.4

(a) Base year: 1989-90=100.0.

(b) State estimates are not comparable to national estimates from the June quarter 1995 due to revised methodology used in *Australian National Accounts, State Accounts* (Cat. no. 5242.0).

Indicator	Unit	ACT			Aust.		
		% change from			% change from		
		Latest figure	Previous period	Same period previous year	Latest figure	Previous period	Same period previous year
<b>TOURISM AND TRANSPORT</b>							
HOTELS, MOTELS AND GUEST HOUSE ACCOMMODATION, Jun qtr 97							
Original series							
Room nights	'000	192.0	-5.6	-11.1	8 699.4	-5.4	-1.0
Takings at current prices	\$m	18.3	-4.7	-9.9	853.2	-7.6	2.1
Takings at 1989-90 prices	\$m	15.2	3.8	-9.0	708.9	-7.3	1.7
Room occupancy rate (Sep qtr 97)(a)	%	56.3	1.8	-1.2	54.6	-4.0	-1.5
Seasonally adjusted series							
Room nights	'000	195.7	-6.9	-10.6	9 101.1	-2.0	-0.8
Takings at current prices	\$m	18.5	-6.6	-9.3	910.9	-1.4	2.6
Takings at 1989-90 prices	\$m	15.4	-5.5	-8.3	756.9	-1.1	2.2
Trend series							
Room nights	'000	202.9	-1.3	-2.4	9 201.2	-0.4	0.6
Takings at current prices	\$m	19.2	-1.0	0.5	922.1	0.7	4.8
Takings at 1989-90 prices	\$m	15.9	-0.6	0.6	764.5	0.6	4.1
NEW MOTOR VEHICLE REGISTRATIONS, Oct 97							
Motor vehicles	no.	1 455	10.6	54.5	66 638	6.6	19.5
Seasonally adjusted motor vehicles	no.	1 421	11.3	58.8	62 752	-0.4	21.4
Trend motor vehicles	no.	1 333	3.2	54.3	62 408	1.6	17.1
<b>AGGREGATE INDICATORS</b>							
STATE ACCOUNTS, Sep qtr 97(a)							
Trend series							
Private Final Consumption expenditure	\$m	1 286	1.9	5.2	68 509	1.1	3.3
Government Final Consumption expenditure	\$m	1 311	0.9	-0.1	18 541	0.3	2.2
Private Gross Fixed Capital Expenditure	\$m	193	2.1	2.1	22 449	4.2	13.9
Government Gross Fixed Capital Expenditure	\$m	-9	-115.3	-107.9	4 802	-3.8	7.1
Final Demand	\$m	2 781	-1.0	-2.0	114 301	1.3	5.2

(a) State estimates are not comparable to national estimates from the June quarter 1995 due to revised methodology used in *Australian National Accounts, State Accounts* (Cat. no. 5242.0).

Source: ABS Catalogue nos: 3101.0, 5242.0, 5609.0, 6202.0, 6203.0, 6302.0, 6321.0, 6354.0, 6401.0, 6408.0, 6416.0, 8501.0, 8634.0, 8635.8, 8731.0, 8752.0, 9214.0, 9301.0.

Indicator	Unit	Latest period	NSW	Vic.	Qld	SA	WA	Tas.	NT	ACT	Aust.
<b>POPULATION</b>	'000	Mar qtr 97	6 260.9	4 595.7	3 392.9	1 478.7	1 791.2	473.8	185.7	310.1	18 492.0
<b>LABOUR FORCE</b>											
Employed persons (trend)	'000	Nov 97	2 811.2	2 107.5	1 586.5	663.8	870.4	193.5	86.7	155.6	8 480.7
Unemployment rate (trend)	%	Nov 97	7.9	8.5	9.4	9.7	6.8	11.3	3.7	8.5	8.4
<b>WAGE AND SALARY EARNERS</b>											
Public Sector (trend)	'000	May 97	471.0	323.3	281.4	115.3	146.2	42.8	22.6	66.7	1 469.6
Private Sector (trend)	'000	May 97	1 914.9	1 410.2	876.7	380.7	529.8	120.7	50.5	75.5	5 358.9
Total Public and Private Sector (trend)	'000	May 97	2 385.9	1 733.5	1 158.1	496.0	675.9	163.4	73.1	142.2	6 828.5
<b>STATE ACCOUNTS(a)</b>											
State Final Demand at 1989-90 prices (trend)	\$m	Sep qtr 97	38 558.0	29 031.0	20 074.0	8 058.0	11 687.0	2 443.0	1 215.0	1 286.0	81 153.0
State Final Demand at current prices (trend)	\$m	Sep qtr 97	44 055.0	32 725.0	23 055.0	9 370.0	13 360.0	2 923.0	1 409.0	1 311.0	22 166.0
<b>BUILDING APPROVALS</b>											
Dwelling units approved	no.	Oct 97	4 180.0	2 616.0	3 176.0	599.0	1 508.0	163.0	242.0	142.0	12 626.0
Dwelling units approved (trend)	no.	Oct 97	4 073.0	2 766.0	3 101.0	561.0	1 358.0	141.0	145.0	123.0	12 119.0
Value of non-residential building approved	\$m	Oct 97	520.3	219.3	249.4	34.1	98.3	10.7	23.7	21.1	1 176.7
Value of all buildings approved	\$m	Oct 97	1 123.1	577.5	576.9	97.4	267.2	28.0	51.7	45.7	2 767.5
<b>ENGINEERING CONSTRUCTION</b>											
Value of engineering construction work done	\$m	Jun qtr 97	1 347.8	783.3	991.1	307.7	689.4	64.3	34.5	38.3	4 256.4
<b>AVERAGE WEEKLY EARNINGS</b>											
Full-time adult ordinary time (trend)	\$	Aug 97	729.6	707.4	665.3	663.4	707.1	674.5	711.0	800.8	779.6
<b>RETAIL TRADE</b>											
Retail turnover (trend)	\$m	Oct 97	4 000.8	2 603.1	2 041.4	820.2	1 132.5	274.5	120.1	213.6	11 210.5
<b>HOTELS, MOTELS AND GUEST HOUSE ACCOMMODATION</b>											
Room nights occupied (trend)	'000	Jun qtr 97	3 096.5	1 531.6	2 445.2	530.5	839.7	250.4	304.4	202.9	9 201.2
Room occupancy rate (original)	%	Jun qtr 97	56.0	53.3	56.4	51.1	53.8	43.7	52.7	56.3	54.6
<b>NEW MOTOR VEHICLE REGISTRATIONS</b>											
Trend	no.	Oct 97	21 131.0	15 907.0	11 430.0	3 981.0	6 705.0	1 286.0	635.0	1 333.0	62 408.0
	Unit	Latest period	Syd.	Melb.	Bris.	Adel.	Perth	Hob.	Dar.	Canb.	Aust.
<b>CONSUMER PRICE INDEX</b>											
Food	(b)	Sep qtr 97	121.4	119.8	118.7	122.0	122.4	121.0	121.8	122.9	120.8
Housing	(b)	Sep qtr 97	101.3	88.7	102.4	92.2	90.4	97.7	113.6	97.0	95.9
Transportation	(b)	Sep qtr 97	125.2	124.6	123.7	123.2	121.8	122.2	122.4	130.6	124.4
All Groups	(b)	Sep qtr 97	119.8	119.5	120.7	121.2	117.5	120.6	121.0	119.8	119.7
Average retail prices (cents)											
Milk, carton, supermarket sales	1 litre	Sep qtr 97	116	130	117	122	133	125	121	114	n.a.
Bread, white loaf, sliced, supermarket sales	680 g	Sep qtr 97	203	199	191	161	182	183	196	190	n.a.
Beef, rump steak	1 kg	Sep qtr 97	1 172	1 072	1 088	1 135	1 024	992	1 218	1 028	n.a.
Chicken, frozen	1 kg	Sep qtr 97	365	398	354	362	364	406	440	372	n.a.
Potatoes	1 kg	Sep qtr 97	122	136	117	111	114	70	132	113	n.a.
Coffee, instant (jar)	150 g	Sep qtr 97	630	638	629	573	685	663	610	614	n.a.
Scotch nip, public bar	30 ml	Sep qtr 97	329	290	255	348	355	253	321	292	n.a.
Private motoring petrol											
Leaded	1 litre	Sep qtr 97	74.6	74.5	65.8	74.5	74.6	79.7	80.9	77.3	n.a.
Unleaded	1 litre	Sep qtr 97	72.4	72.3	63.6	72.2	72.5	77.7	78.9	75.1	n.a.

(a) State estimates are not comparable to national estimates from the June quarter 1995 due to revised methodology used in *Australian National Accounts, State Accounts* (Cat. no. 5242.0).

(b) Base year: 1989-90=100.0.

Indicator	Latest period	NSW	Vic.	Qld	SA	WA	Tas.	NT	ACT	Aust.
<b>POPULATION</b>	Mar qtr 97	0.3	0.3	0.6	0.1	0.5	-0.1	0.4	0.5	0.4
<b>LABOUR FORCE</b>										
Employed persons (trend)	Nov 97	0.3	0.3	0.3	—	0.3	0.3	0.6	-0.3	0.3
Unemployment rate (trend)	Nov 97	—	0.2	—	—	—	—	-0.4	0.1	-0.1
<b>WAGE AND SALARY EARNERS</b>										
Public Sector (trend)	May 97	-1.6	1.0	0.1	-2.1	-0.5	-1.8	0.9	-2.1	-0.6
Private Sector (trend)	May 97	1.9	—	1.2	-0.3	0.2	-0.2	-1.2	5.0	0.9
Total Public and Private Sector (trend)	May 97	1.1	0.2	0.9	-0.7	—	-0.8	-0.4	1.6	0.6
<b>STATE ACCOUNTS(a)</b>										
Gross State product at 1989-90 prices (trend)	Sep qtr 97	-2.6	0.8	1.3	2.0	2.5	-1.2	0.5	1.9	1.4
Gross State product at current prices (trend)	Sep qtr 97	-2.1	1.3	1.2	2.4	2.8	-0.5	—	0.9	1.2
<b>BUILDING APPROVALS</b>										
Dwelling units approved	Oct 97	0.5	8.7	-9.0	-0.2	13.6	9.4	146.9	71.1	-1.1
Dwelling units approved (trend)	Oct 97	-0.6	0.3	2.9	—	-0.1	-1.4	-2.7	7.9	0.6
Value of non-residential building approved	Oct 97	31.3	-7.4	-2.5	-41.8	74.0	-20.7	154.8	134.4	13.6
Value of all buildings approved	Oct 97	17.2	-6.6	-10.4	-19.6	26.2	-7.0	132.9	80.6	5.2
<b>ENGINEERING CONSTRUCTION</b>										
Value of engineering construction work done	Jun qtr 97	25.9	32.5	24.9	53.6	16.7	7.2	13.9	28.1	26.4
<b>AVERAGE WEEKLY EARNINGS</b>										
Full-time adult ordinary time (trend)	Aug 97	0.8	1.6	0.8	1.1	1.3	1.1	0.9	0.6	1.3
<b>RETAIL TRADE</b>										
Retail turnover (trend)	Oct 97	0.4	0.5	0.5	0.4	0.5	0.9	0.9	0.1	0.5
<b>HOTELS, MOTELS AND GUEST HOUSE ACCOMMODATION</b>										
Room nights occupied (trend)	Jun qtr 97	-0.8	0.8	-0.3	0.1	-0.1	-2.4	-1.6	-1.3	-0.4
Room occupancy rate (original)	Jun qtr 97	-4.9	-6.5	-0.9	-4.3	-3.3	-19.2	6.3	1.8	-4.0
<b>NEW MOTOR VEHICLE REGISTRATIONS</b>										
Trend	Oct 97	1.6	3.2	-0.2	0.8	1.7	-0.5	-0.8	3.2	1.6
	Latest period	Syd.	Melb.	Bris.	Adel.	Perth	Hob.	Dar.	Canb.	Aust.
<b>CONSUMER PRICE INDEX</b>										
Food	Sep qtr 97	-0.1	0.2	-1.0	0.1	0.4	—	-0.2	0.3	0.0
Housing	Sep qtr 97	-0.5	-1.6	-0.6	-2.0	-1.5	-0.7	-0.9	-1.7	-1.0
Transportation	Sep qtr 97	0.5	0.6	—	0.4	-0.3	0.4	—	-0.1	0.4
All Groups	Sep qtr 97	-0.3	-0.3	-0.3	-0.6	-0.5	-0.6	-0.4	-0.5	-0.4
Average retail prices (cents)										
Milk, carton, supermarket sales	Sep qtr 97	0.9	—	0.9	—	2.3	—	3.4	1.8	n.a.
Bread, white loaf, sliced, supermarket sales	Sep qtr 97	1.0	3.6	-3.0	0.6	2.2	7.0	1.0	-1.6	n.a.
Beef, rump steak	Sep qtr 97	-2.7	3.8	0.4	-0.5	-4.8	3.5	2.4	-1.4	n.a.
Chicken, frozen	Sep qtr 97	3.7	2.8	7.6	-2.2	3.1	1.0	1.6	-1.3	n.a.
Potatoes	Sep qtr 97	0.8	4.6	0.9	2.8	1.8	-9.1	1.5	-0.9	n.a.
Coffee, instant (jar)	Sep qtr 97	4.0	15.2	5.4	6.3	18.7	5.6	3.0	-3.8	n.a.
Scotch nip, public bar	Sep qtr 97	3.5	1.4	0.4	0.9	1.4	1.6	0.6	0.3	n.a.
Private motoring petrol										
Leaded	Sept qtr 97	-1.7	1.4	-1.9	-1.2	-3.1	-0.4	-1.9	-2.9	n.a.
Unleaded	Sept qtr 97	-1.8	1.3	-2.0	-1.1	-3.1	-0.3	-2.0	-3.0	n.a.

(a) State estimates are not comparable to national estimates from the June quarter 1995 due to revised methodology used in *Australian National Accounts, State Accounts* (Cat. no. 5242.0).

## For more information . . .

The ABS publishes a wide range of statistics and other information on Australia's economic and social conditions. Details of what is available in various publications and other products can be found in the ABS Catalogue of Publications and Products available from all ABS Offices.

### ABS Products and Services

Many standard products are available from ABS bookshops located in each State and Territory. In addition to these products, information tailored to the needs of clients can be obtained on a wide range of media by contacting your nearest ABS Office. The ABS also provides a Subscription Service for standard products and some tailored information services.

### National Dial-a-Statistic Line

0055 86 400

*Steadycom P/L: premium rate 25c/20 secs.*

This number gives 24-hour access, 365 days a year, for a range of important economic statistics including the CPI.

### Internet

<http://www.abs.gov.au>

A wide range of ABS information is available via the Internet, with basic statistics available for each State, Territory and Australia. We also have Key National Indicators, ABS product release details and other information of general interest.

## Sales and Inquiries

[client.services@abs.gov.au](mailto:client.services@abs.gov.au)

National Mail Order Service	(02) 6252 5249
Subscription Service	1300 366 323

	Information Inquiries	Bookshop Sales
CANBERRA	(02) 6252 6627	(02) 6207 0326
SYDNEY	(02) 9268 4611	(02) 9268 4620
MELBOURNE	(03) 9615 7755	(03) 9615 7755
BRISBANE	(07) 3222 6351	(07) 3222 6350
PERTH	(08) 9360 5140	(08) 9360 5307
ADELAIDE	(08) 8237 7100	(08) 8237 7582
HOBART	(03) 6222 5800	(03) 6222 5800
DARWIN	(08) 8943 2111	(08) 8943 2111



Client Services, ABS, PO Box 10, Belconnen ACT 2616







1990